



The conscience of things.

CANISTER & KEG MONITORING USE CASE
NOVEMBER 2018

Track.

Locate.

Geofence.

Detect movement.

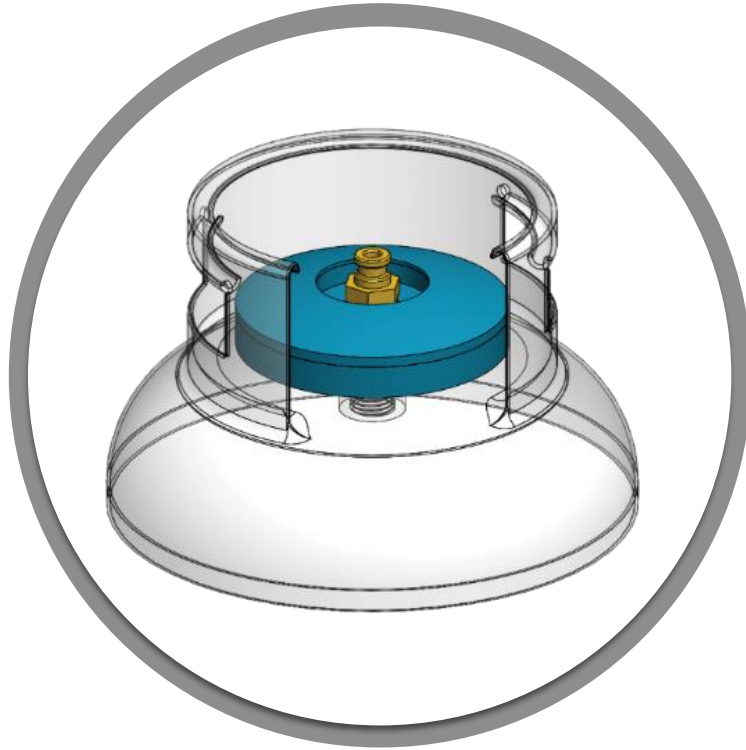
Measure impact.

Monitor temperature.

Add your sensors.

LOKA has developed a
revolutionary solution that
gives conscience to your
Business Assets.

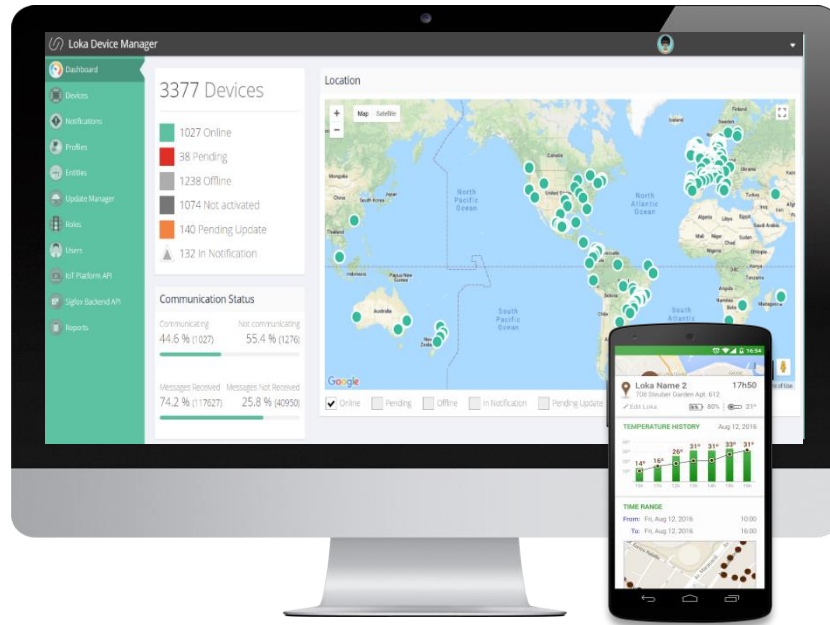
The IoT Solution includes a connected
Devices and a **Cloud Platform** with
Geolocation capabilities.



LOKA INCUS

The LOKA Devices sensors do readings of the surrounding environment, indoor and outdoor, and data is then transmitted to the IoT cloud platform, using Sigfox, Bluetooth or Wi-Fi connectivity, according to your personalized notifications.

The data can be anything, from temperature, to battery values, to movement detection, and geolocation information.

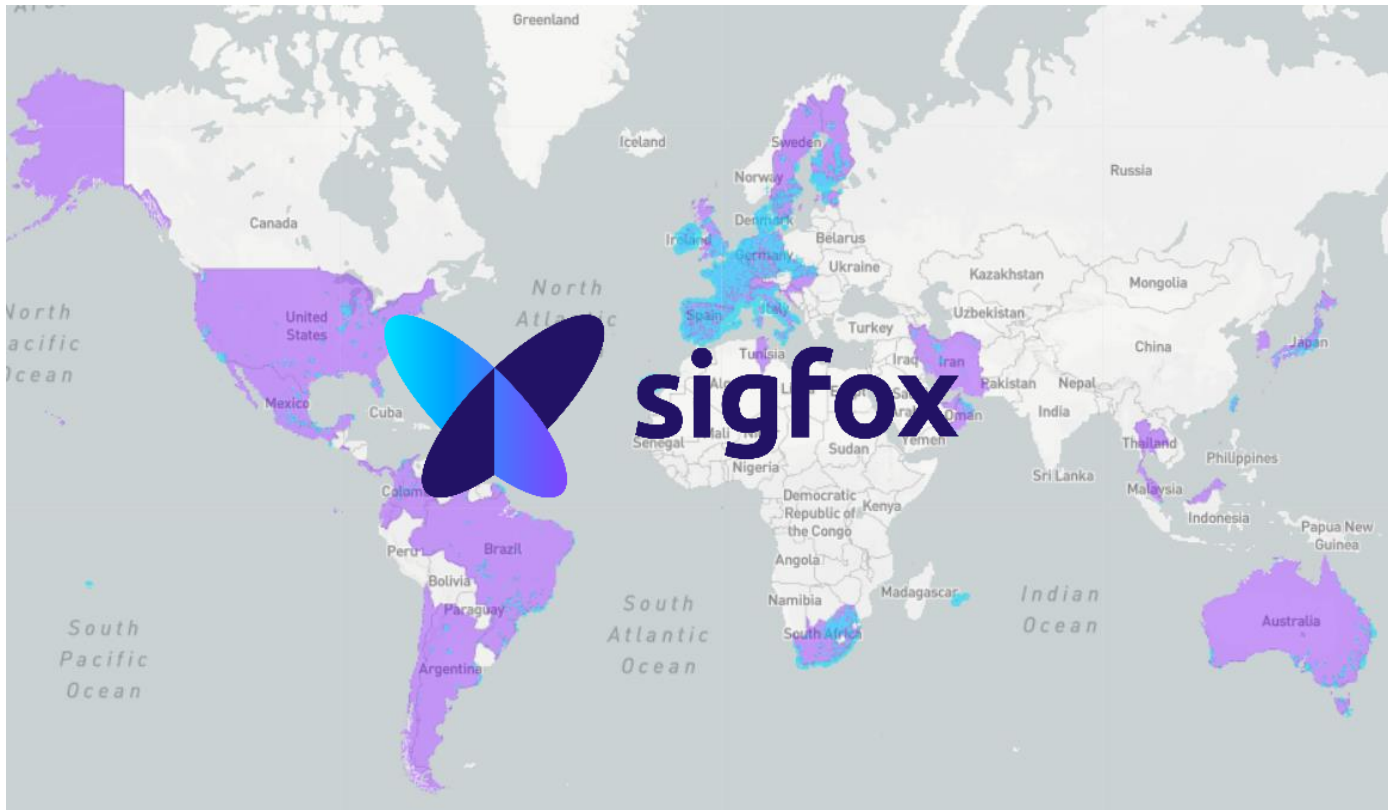


LOKA MIND

The LOKA Device Manager interprets and translates the data received from the devices, to present it in a user-friendly interface.

It enables you to track and get information on any asset, or thing, you want to monitor.

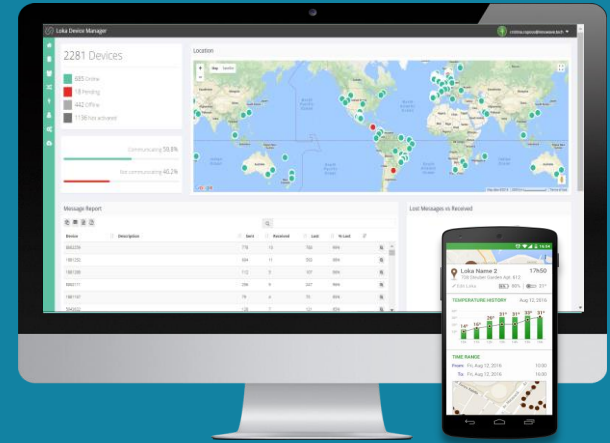




The Sigfox network is the world's leading provider of narrow-band connectivity for the Internet of Things (IoT).

Sigfox provides extremely price-competitive connectivity subscriptions and even more importantly, enables extremely simple and cost-efficient silicon modules.

How it works



Measure
Temperature



Detect
Motion



Wi-fi
Sniffing



Bluetooth
Geofencing



Track
and Trace



Get notified
of changes



Reporting

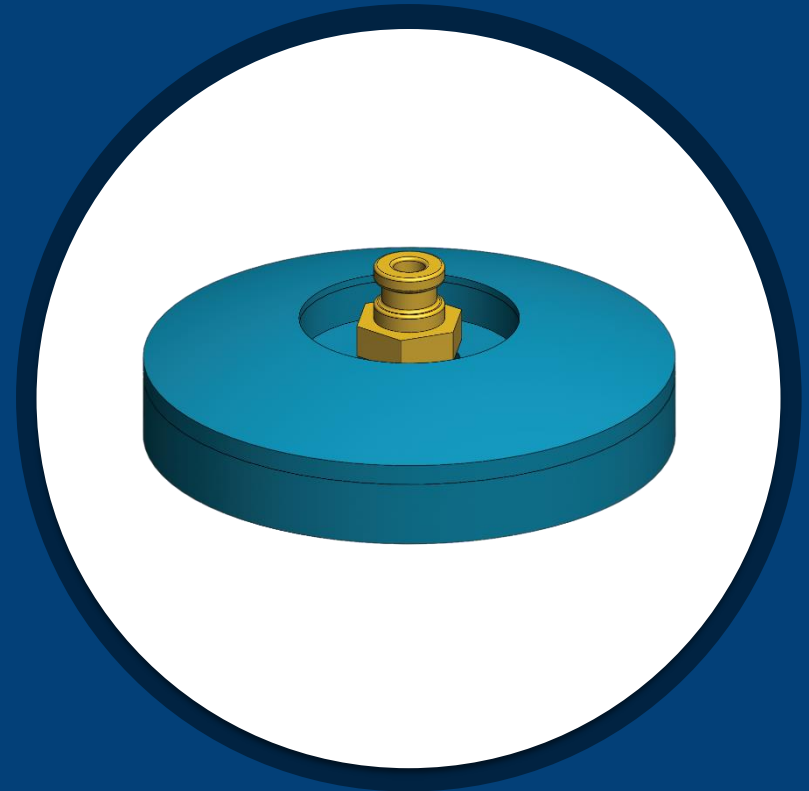


API
Integration

**Get information on
any canister or keg
you want to
monitor.**



**Now,
imagine
you have one of
LOKA's devices.
Or a lot of them.**



LOKA INCUS

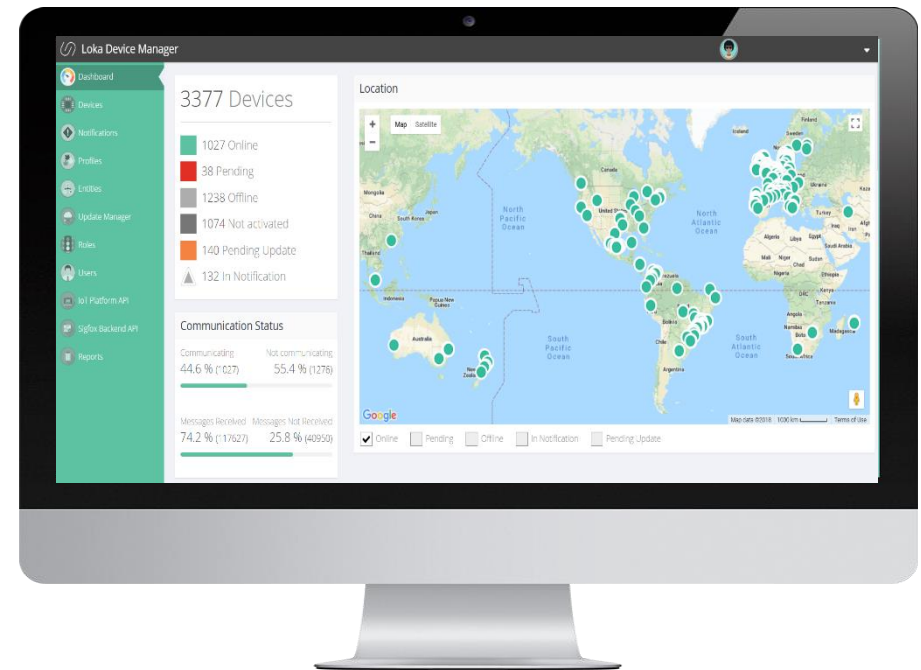


Apply the LOKA Device to:

- Gas canisters**
- CO2 tanks**
- Oxygen canisters**
- Liquid canisters**

In the LOKA MIND, all devices can be managed separately, or in predefined groups. You can monitor:

- **Filling Level**
- **Temperature**
- **Location & Geofencing**
- **Movement**
- **Battery**



LOKA MIND



LOKA MIND enables the configuration of the devices to operate in four different modes:



MOVEMENT



TRACKER



TEMPERATURE



TRACKER & TEMPERATURE

Each operating mode uses a different trigger (location, temperature or movement), to make the device send messages.

Most times, the sent message includes the same type of information in all of the operating modes: the difference lies in which of the [sensors triggers the message](#).

The LOKA MIND is your device manager that provides all the information on your device activity, from [location, sensors and values, to battery voltage](#).

You can filter, create your own reports and export data, or even [use the API](#) to seamlessly integrate the data on your own platform.



Your LOKA device will send information when your **gas canister level is under 30%**, making it possible to:

- send alerts that **notify** customers and/or gas distributors.
- optimize distributors' business processes and **distribution routes**.

The screenshot displays the Loka Device Manager web interface. At the top, the title 'Loka Device Manager' is visible. Below the title, there are two status boxes: 'Last communication 24/07/18' and 'Device configuration Updated'. A green 'Options' button is located on the right. A 'Time Filter' section shows 'Start Date 2018-07-17 09:45:49' and 'End Date 2018-07-24 09:45:49', with a checked box for 'See Only Last Position in Map' and a 'Filter' button. The main area is titled 'Location' and includes a 'Hide Low Accuracy Locations' checkbox. The map shows a street grid in Deiras/Paço de Arcos. A green circle highlights a specific location. A data popup for this location reads: 'Date: 2018-07-19 10:08:13', 'Accuracy: 10 m', and 'Speed: 0 Km/h'. A green callout bubble points to the circle, stating: 'The device will be in a radius of 10 m from the center point marked in the map.'

This is how we show you your devices' **Location**.

The LOKA IoT solution provides geolocation information, both outdoors and indoors, **without requiring a GPS**.

The solution is based on the **Sigfox technology** and **Wi-Fi sniffing**, enabling unparalleled low power, with a wide communication range.

Each location is composed of a **coordinate** (center point) and an **accuracy radius**, meaning the device is inside the **green circle**.

You can see your device location in a given time range, or choose to see just the last known location.

Loka Device Manager

Notifications

15 Entries by page

Sensor / Not. Type	Name	Status	Open Date	Close Date
Geo Fencing	Office	Out	2018-08-07 18:51:22	
Other	Movement Detection	Closed	2018-08-07 08:52:30	2018-08-07 08:52:30
Geo Fencing	Home	In	2018-08-07 08:52:30	2018-08-07 19:06:42

Out Date: 2018-08-07 08:52:30

Device Moved out Geofencing perimeters

In Date: 2018-08-07 19:06:42

Device Moved in Geofencing perimeters

Here is an example of **Notifications** that you can configure, in order to receive alerts.

The LOKA IoT Solution enables the configuration of notifications for every device sensor (temperature, movement, voltage) and the device location (**Geofencing**).

With the **Geofencing** functionality, the LOKA Device Manager can send you alerts whenever one device arrives or leaves a given area (eg. your offices).

Loka Device Manager

Notifications

15 Entries by page

Sensor / Not. Type	Name
Temperature	High Temp 25
Trigger: > 25	
Open Value: 30	
Close Date: 2018-08-01 22:34:54	
Close Value: 25	
Geo Fencing	Office

Here is an example of **Temperature Notifications** you can receive.

You will define that you want to be alerted every time the device registers a temperature above 25°C. So here you received the notification because your asset's temperature reached 30°C. And that notification was closed when it regulated back to 25°C.

CANISTERS & KEGS WITH LOKA GAIN CONSCIENCE OF:

- ✓ **gas / beer**, that now are tracked and monitored;
- ✓ **low gas / beer levels in the canisters / kegs**;
- ✓ **gas / beer distribution network** route and order management;
- ✓ **whenever the asset LOKA is tracking enters or leaves the premises, thanks to notifications** you have received.

BENEFITS FOR CANISTERS & KEG MONITORING

- ✓ **MONITOR USAGE CONDITIONS:** In the LOKA Device Manager, all devices can be managed separately, or in predefined groups. You can monitor Gas Filling Level, Location & Geofencing, Movement, Battery level.
- ✓ **ADDED SECURITY:** be alerted if unauthorized use or asset tampering is detected.
- ✓ **ADD NEW REVENUE STREAMS:** offer new services to your customers, by providing them with updated information on their assets, thus increasing your company's trust and reliability.
- ✓ **ENHANCE INTERACTION WITH YOUR CUSTOMERS:** receive information that will enable you to understand how your customers use your services, and that will translate into actionable insights. Improve internal processes, and offer a better customer service.
- ✓ **PREVENT LOSS AND THEFT OF YOUR ASSETS:** ensuring the security of its inventory, track and trace your assets, and easily retrieve them in case of loss or theft.
- ✓ **INTRODUCE PREDICTIVE MAINTENANCE:** introduce order management prediction into your distribution process, and ensure maintenance schedules are met, based on the assets' usage monitoring.
- ✓ **OPTIMIZE DISTRIBUTION:** optimize distributors' business processes and distribution routes, through customer usage information and prediction.

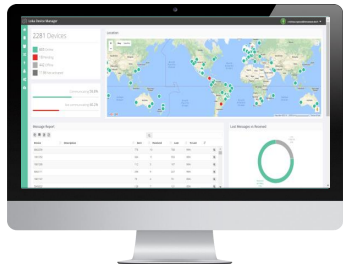
Business Model



LOKA PRIMIS device acquisition

Ranging from 16,00 to 39,50 EUR per device, pricing is dependent on order volume.

With acquisition of the device, we offer the LOKA Mind subscription and geolocation service fee for the first year.



Annual LOKA MIND - device manager Fee

After the first year, an annual service fee applies, per device and per year, for the usage of the IoT Cloud Platform and Geolocation services. Ranging from 0,50 to 2,50 EUR, pricing is dependent on order volume.

This service includes online and remote Support services.



Sigfox Connectivity

LOKA delivers the devices with Sigfox connectivity included. Or you can contact your local Sigfox Network Operator for a connectivity quote.



Want to see more? Connect with us

João Tacanho

Managing Director

joao.tacanho@loka-systems.com

Cristina Raposo

Head of Sales & MKT

cristina.raposo@loka-systems.com

