



**The conscience of things.**

**FLEET MANAGEMENT USE CASE**

November 2018

**Track.**

**Locate.**

**Geofence.**

**Detect movement.**

**Measure impact.**

**Monitor temperature.**

**Add your sensors.**

LOKA has developed a  
revolutionary solution that  
**gives conscience to your**  
Business Assets.

The IoT Solution includes a connected  
**Devices** and a **Cloud Platform** with  
Geolocation capabilities.



**LOKA PRIMIS**

The **LOKA Devices** sensors do readings of the surrounding environment, **indoor and outdoor**, and data is then transmitted to the IoT cloud platform, using Sigfox, Bluetooth or Wi-Fi connectivity, according to your personalized notifications.

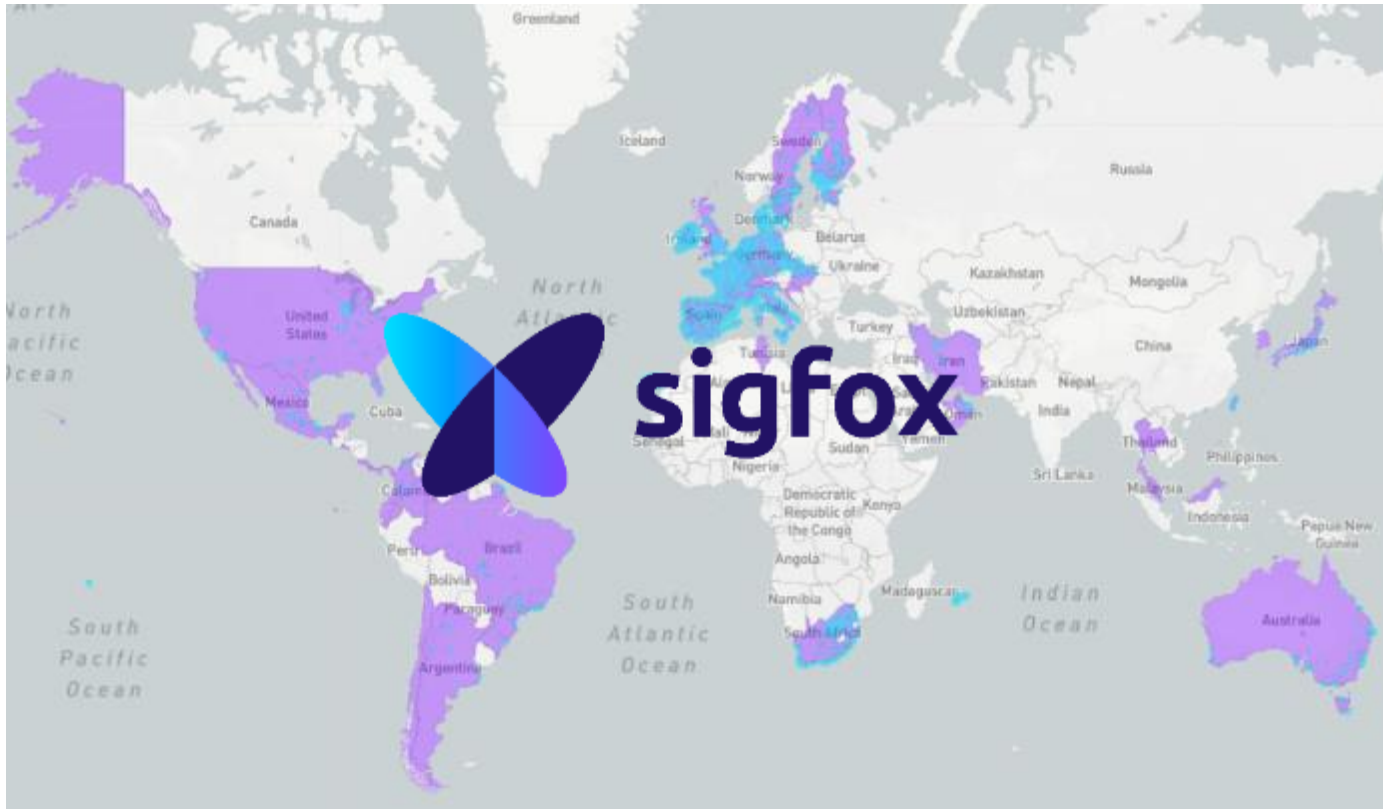
The data can be anything, from temperature, to battery values, to movement detection, and geolocation information.



**LOKA MIND**

**The LOKA Device Manager interprets and translates the data received from the devices, to present it in a user-friendly interface.**

**It enables you to track and get information on any asset, or thing, you want to monitor.**



**The Sigfox network is the world's leading provider of narrow-band connectivity for the Internet of Things (IoT).**

**Sigfox provides extremely price-competitive connectivity subscriptions and even more importantly, enables extremely simple and cost-efficient silicon modules.**

# How it works



Measure  
Temperature



Detect  
Motion



Wi-fi  
Sniffing



Bluetooth  
Geofencing



Track  
and Trace



Get notified  
of changes



Reporting



API  
Integration

**This enables you  
to track and get  
information on  
any asset, or  
thing, you want  
to monitor.**





**Now,  
imagine  
you have one of  
LOKA's devices.  
Or a lot of them.**



**LOKA PRIMIS**

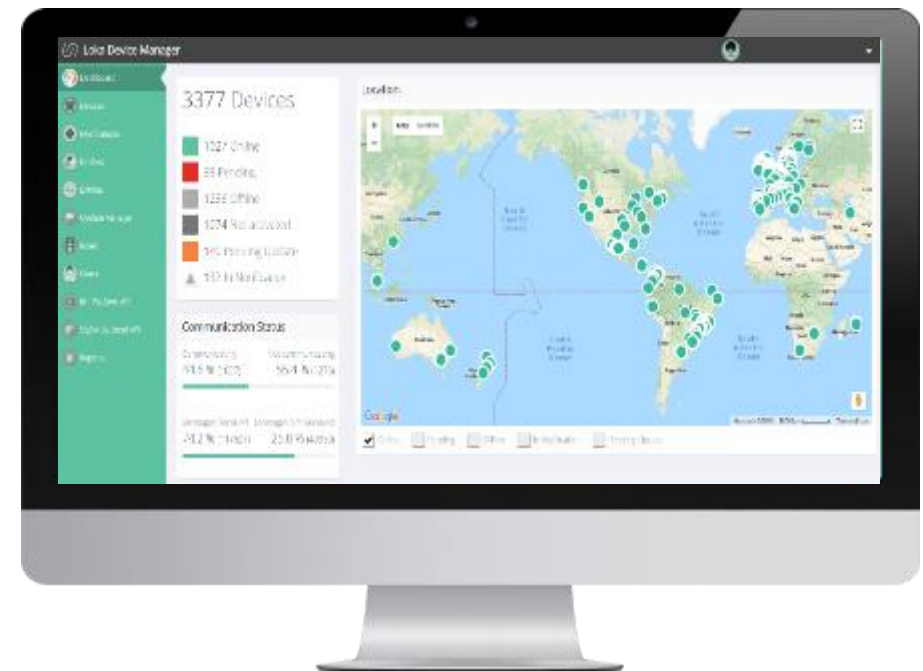


## Apply the LOKA Device to:

- Cars
- Motorcycles
- Trucks
- Buses

**In the LOKA MIND, all devices can be managed separately, or in predefined groups. You can monitor:**

- Location & Geofencing**
- Temperature**
- Movement**
- Battery**



**LOKA MIND**



**LOKA MIND enables the configuration of the devices to operate in four different modes:**



**MOVEMENT**



**TRACKER**



**TEMPERATURE**



**TRACKER & TEMPERATURE**

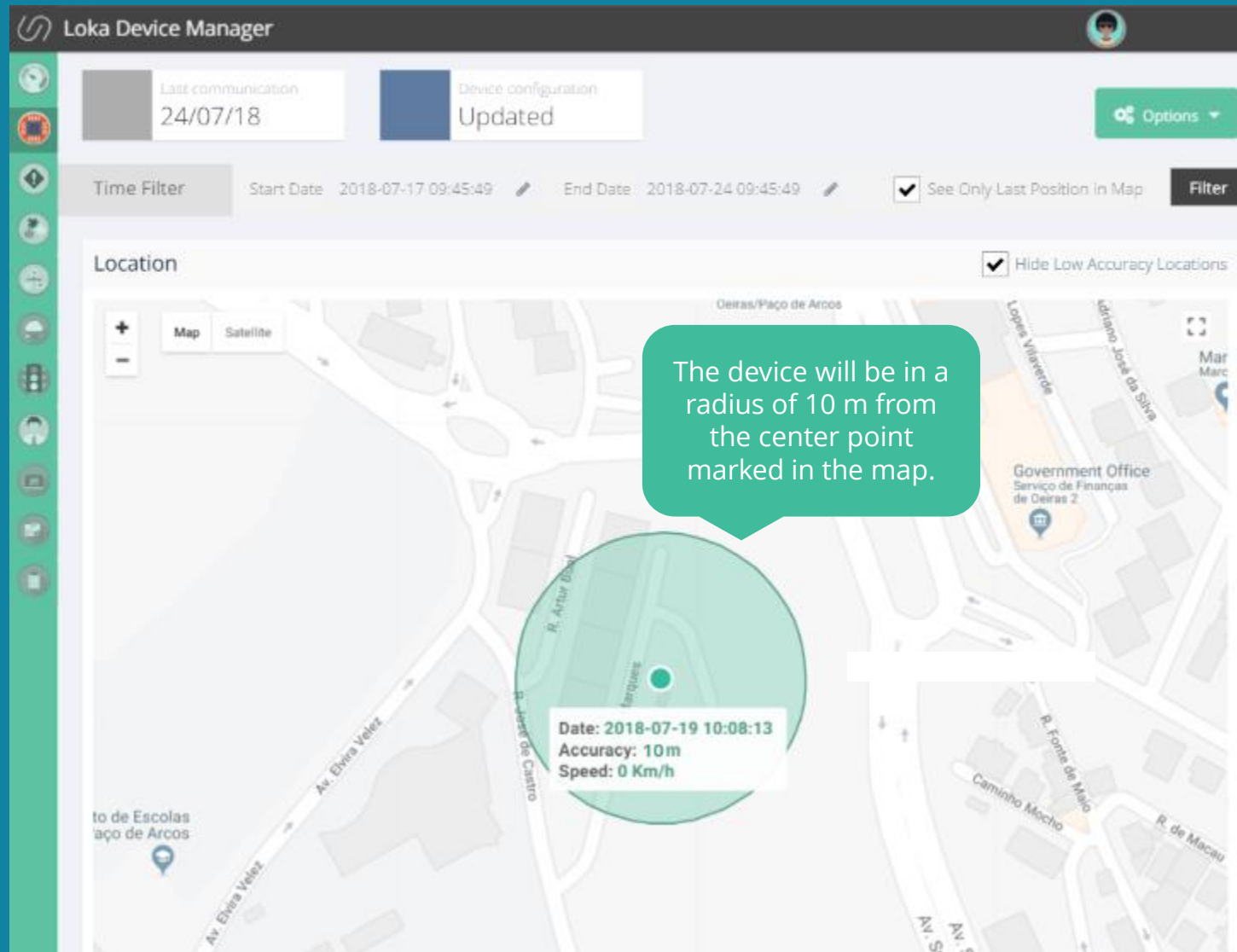
**Each operating mode uses a different trigger (location, temperature or movement), to make the device send messages.**

**Most times, the sent message includes the same type of information in all of the operating modes: the difference lies in which of the [sensors triggers the message](#).**

**The LOKA MIND is your device manager that provides all the information on your device activity, from [location, sensors and values, to battery voltage](#).**

**You can filter, create your own reports and export data, or even [use the API](#) to seamlessly integrate the data on your own platform.**





This is how we show you your devices' **Location**.

The LOKA IoT solution provides geolocation information, both outdoors and indoors, **without requiring a GPS**.

The solution is based on the **Sigfox technology** and **Wi-Fi sniffing**, enabling unparalleled low power, with a wide communication range.

Each location is composed of a **coordinate** (center point) and an **accuracy radius**, meaning the device is inside the **green circle**.

You can see your device location in a given time range, or choose to see just the last known location.

Loka Device Manager

Notifications

15 Entries by page

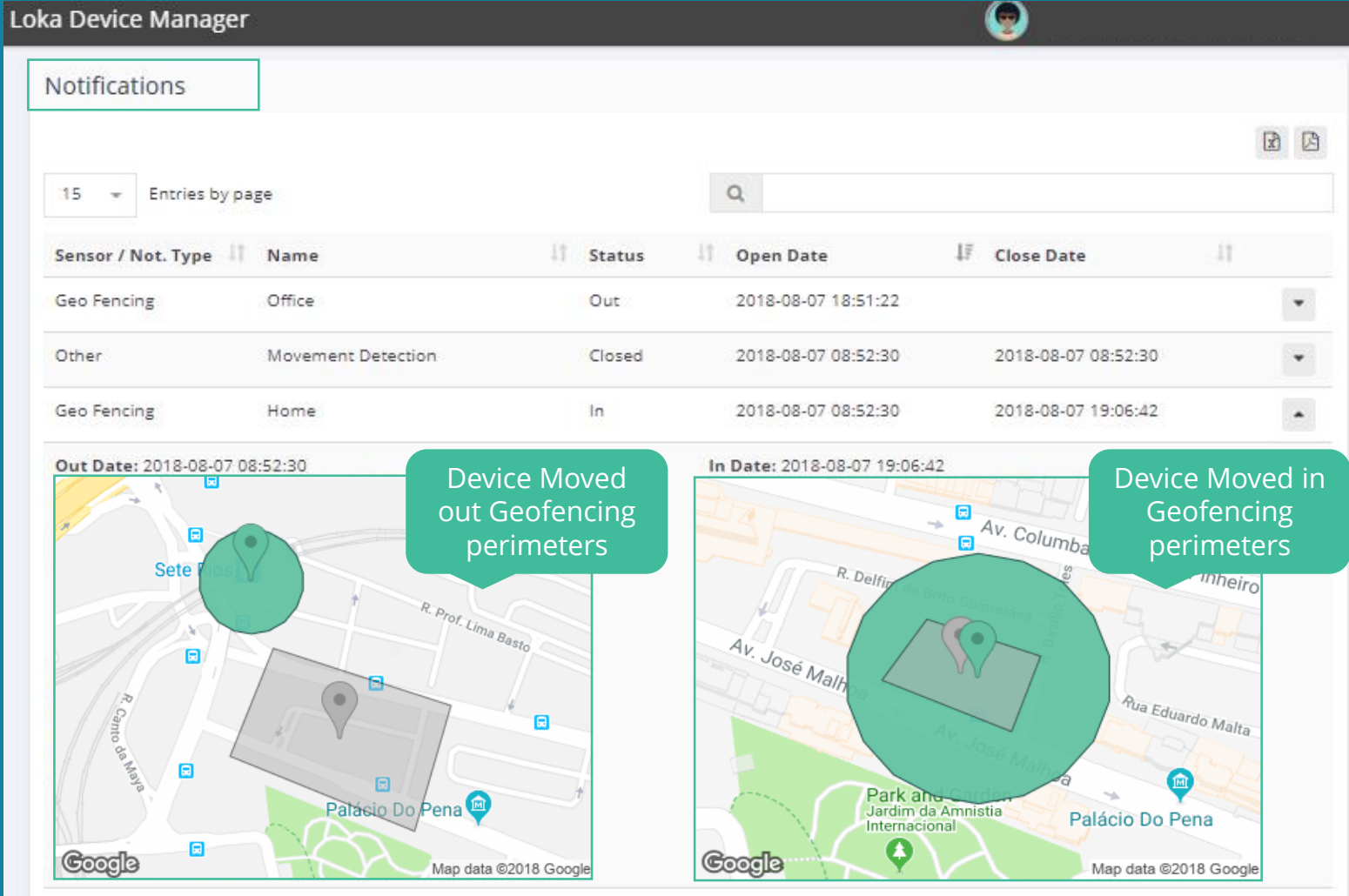
Sensor / Not. Type	Name	Status	Open Date	Close Date
Geo Fencing	Office	Out	2018-08-07 18:51:22	
Other	Movement Detection	Closed	2018-08-07 08:52:30	2018-08-07 08:52:30
Geo Fencing	Home	In	2018-08-07 08:52:30	2018-08-07 19:06:42

Out Date: 2018-08-07 08:52:30

Device Moved out Geofencing perimeters

In Date: 2018-08-07 19:06:42

Device Moved in Geofencing perimeters



Here is an example of **Notifications** that you can configure, in order to receive alerts.

The LOKA IoT Solution enables the configuration of **notifications for every device sensor (temperature, movement, voltage) and the device location (Geofencing).**

With the **Geofencing** functionality, the LOKA Device Manager can send you alerts whenever one device arrives or leaves a given area (eg. your offices).





## FLEET MANAGERS WITH LOKA GAIN CONSCIENCE OF:

- ✓ **vehicles**, that now are tracked and monitored;
- ✓ whenever the asset LOKA is tracking enters or leaves the premises, thanks to **notifications** you have received.



# **BENEFITS FOR FLEET MANAGEMENT**

## **✓ MONITOR USAGE CONDITIONS**

**understand how your customers use your services, and be alerted if unauthorized use is detected;**

## **✓ ADD NEW REVENUE STREAMS**

**offer new services to your customers, by providing them with updated information on their assets, thus increasing your company's trust and reliability;**

## **✓ PREVENT LOSS AND THEFT OF YOUR ASSETS**

**track and trace your assets, find them in case of loss or theft;**

## **✓ INTRODUCE PREDICTIVE MAINTENANCE**

**ensure maintenance schedules are met, based on equipment usage monitoring.**



# Business Model



## **LOKA PRIMIS device acquisition**

Ranging from 16,00 to 39,50 EUR per device, pricing is dependent on order volume.

With acquisition of the device, we offer the LOKA Mind subscription and geolocation service fee for the first year.



## **Annual LOKA MIND - device manager Fee**

After the first year, an annual service fee applies, per device and per year, for the usage of the IoT Cloud Platform and Geolocation services. Ranging from 0,50 to 2,50 EUR, pricing is dependent on order volume.

This service includes online and remote Support services.



## **Sigfox Connectivity**

LOKA delivers the devices with Sigfox connectivity included. Or you can contact your local Sigfox Network Operator for a connectivity quote.



# Want to see more? Connect with us

**João Tacanho**

Managing Director

[joao.tacanho@loka-systems.com](mailto:joao.tacanho@loka-systems.com)

**Cristina Raposo**

Head of Sales & MKT

[cristina.raposo@loka-systems.com](mailto:cristina.raposo@loka-systems.com)

